

# Boston Gear®

## Conduit Box Kit for use with Electro Modules

819-0398

*Installation and Operation*

Doc. No. 84309



**Boston**  
Gear

[www.bostongear.com](http://www.bostongear.com)

**⚠ WARNING** Make sure all power is turned off to this equipment when installing. Failure to follow these instructions may result in product damage, equipment damage, and serious or fatal injury to personnel.

### Introduction

This Boston Gear conduit box is designed to provide a proper enclosure for wiring terminations.

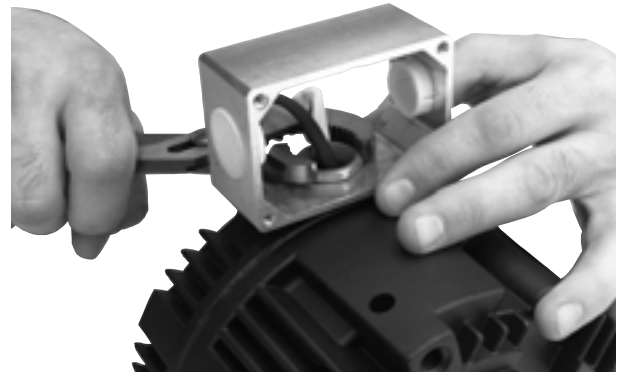
### Assembly to Uni-Module

1. Feed clutch/brake lead wires through rubber washer (10) and bottom hole in conduit box (1) and conduit box fitting (2). (See Figure 1)



(Figure 1)

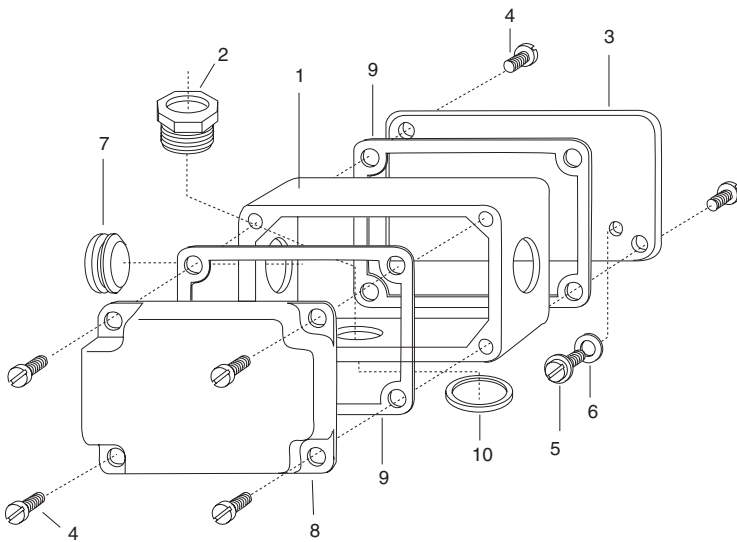
2. Insert conduit box fitting (2) through bottom hole of conduit box and thread into tapped hole of module housing. Tighten securely to hold box in place. (See Figure 2)



**Note:** Hold wires to prevent twisting.

Figure 2

3. Assemble 1/2" flexible conduit fitting into desired end of conduit box. Avoid using excess force which could damage the mounting. Install protective plug (fitting only) (7) into conduit box hole which is not used. (See Figure 3)



### Parts list for kit 5370-101-074

Item	Quantity	Part Name
1	1	Conduit Box
2	1	Conduit Box Fitting
3	1	Cover Plate
4	6	Pan Head Tapping Screw
5	1	Hex. Washer Head Screw
6	1	Ring Terminal
7	2	Protective Plug
8	1	Cover (Plastic)
9	2	Gasket
10	1	Rubber Washer

**Note:** All screws are self tapping.

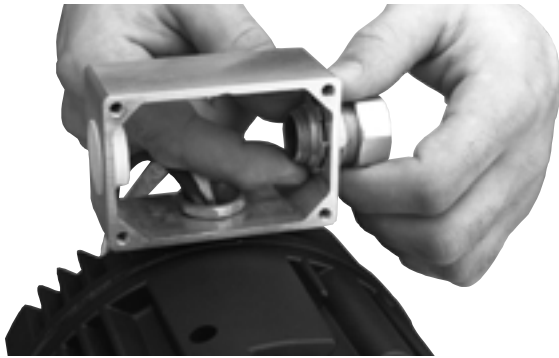


Figure 3

4. Connect electric supply cable or flexible conduit to the fitting installed in the conduit box. **Rigid conduit must not be connected directly to the box as clutch/brake damage may result.** A minimum of 12 inches of flexible cable or conduit is recommended. (See Figure 4)



Figure 4

5. Connect back cover (3) to the conduit box with two self tapping screws (4). (See Figure 5)

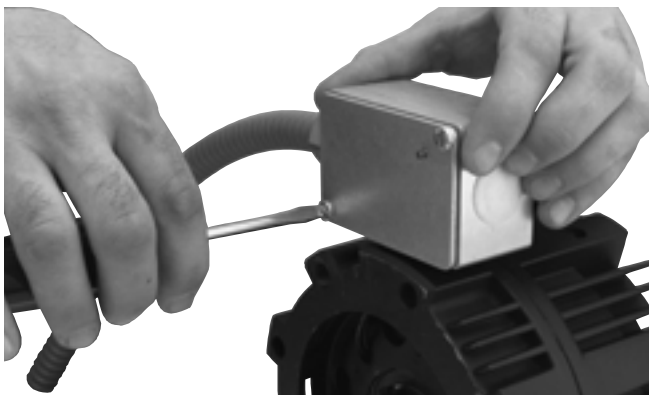


Figure 5

## 6. Electrical Connections

- A. If external control is used, make wire connections with wire nuts or appropriate means in compliance with local electrical codes. Use **green** self tapping screw (5) and wire washer (6) for grounding. (See Figure 6)

**Important** – Provide only D.C. power to the clutch/brake. A.C. voltage will not allow unit to function properly and damage may result.

- B. If a control (not furnished) is used, cut clutch/brake lead wires off to meet local codes and make connections per control installation instructions. Use green self tapping screw (5) and wire washer (6) for grounding. Mount control to box with four self tapping screws (4).

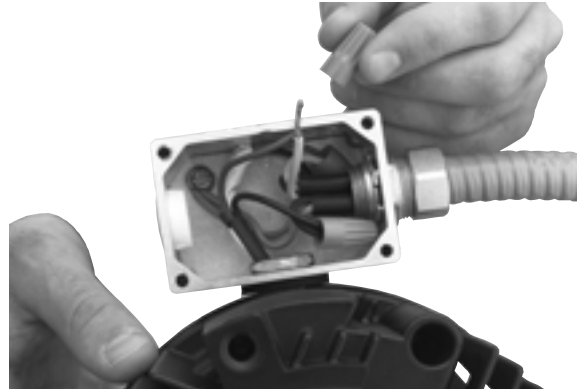


Figure 6

7. If external control is used, install the black plastic front cover (8) using the four self tapping screws (4) furnished. (See Figure 7)



Figure 7

# Warranty

Boston Gear warrants that products manufactured or sold by it shall be free from defects in material and workmanship. Any products which shall within two (2) years of delivery, be proved to the Company's satisfaction to have been defective at the time of delivery in these respects will be replaced or repaired by the Company at its option. Freight is the responsibility of the customer. The Company's liability under this limited warranty is limited to such replacement or repair and it shall not be held liable in any form of action for direct or consequential damages to property or person. The foregoing limited warranty is expressly made in lieu of all other warranties whatsoever, express, implied and statutory and including without limitation the implied warranties of merchantability and fitness.

No employee, agent, distributor, or other person is authorized to give additional warranties on behalf of Boston Gear, nor to assume for Boston Gear any other liability in connection with any of its products, except an officer of Boston Gear by a signed writing.



**Boston Gear**  
14 Hayward Street • Quincy, MA 02171  
617-328-3300 • Fax: 617-479-6238  
[www.bostongear.com](http://www.bostongear.com)