

A-Track Linear Actuators



Acme Screw

AC&DC Models

 **INDUSTRIAL MAGZA**
DIST. AUTORIZADO

MEX (55) 53 63 23 31 MTY (81) 82 54 10 18
QRO (442) 1 95 72 60 ventas@industrialmagza.com

Ball Screw

 **Warner**
Electric

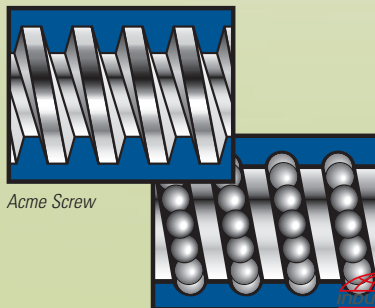
A-Track Electromechanical Linear Actuator Systems

Warner Electric linear actuators are comprised of a combination electric motor, gear train and drive screw. The direct conversion of electric to mechanical energy results in effective, economical linear motion. Completely self-contained and sealed A-Track actuators require minimal installation hardware and wiring, and eliminate the need for periodic maintenance and adjustment.



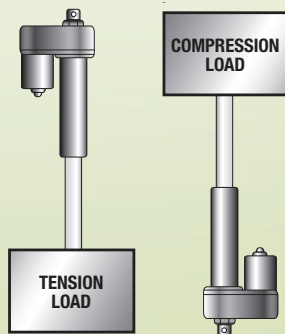
Lead screw drive systems

A-Track 1 and 2 models feature Acme Screws which will not backdrive when the power is off. A-Track 10 series actuators are equipped with highly efficient and accurate Warner Electric ball bearing screws. A load holding brake keeps the load in position when power is off. A-Track 5 models are available with either Acme or Ball Screw drives.



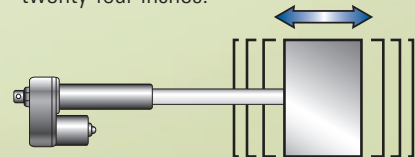
Acme Screw

Ball Screw



Bi-directional

A-Track actuators can push and pull loads ranging from one pound to 2/3 of a ton, and can extend up to twenty-four inches.



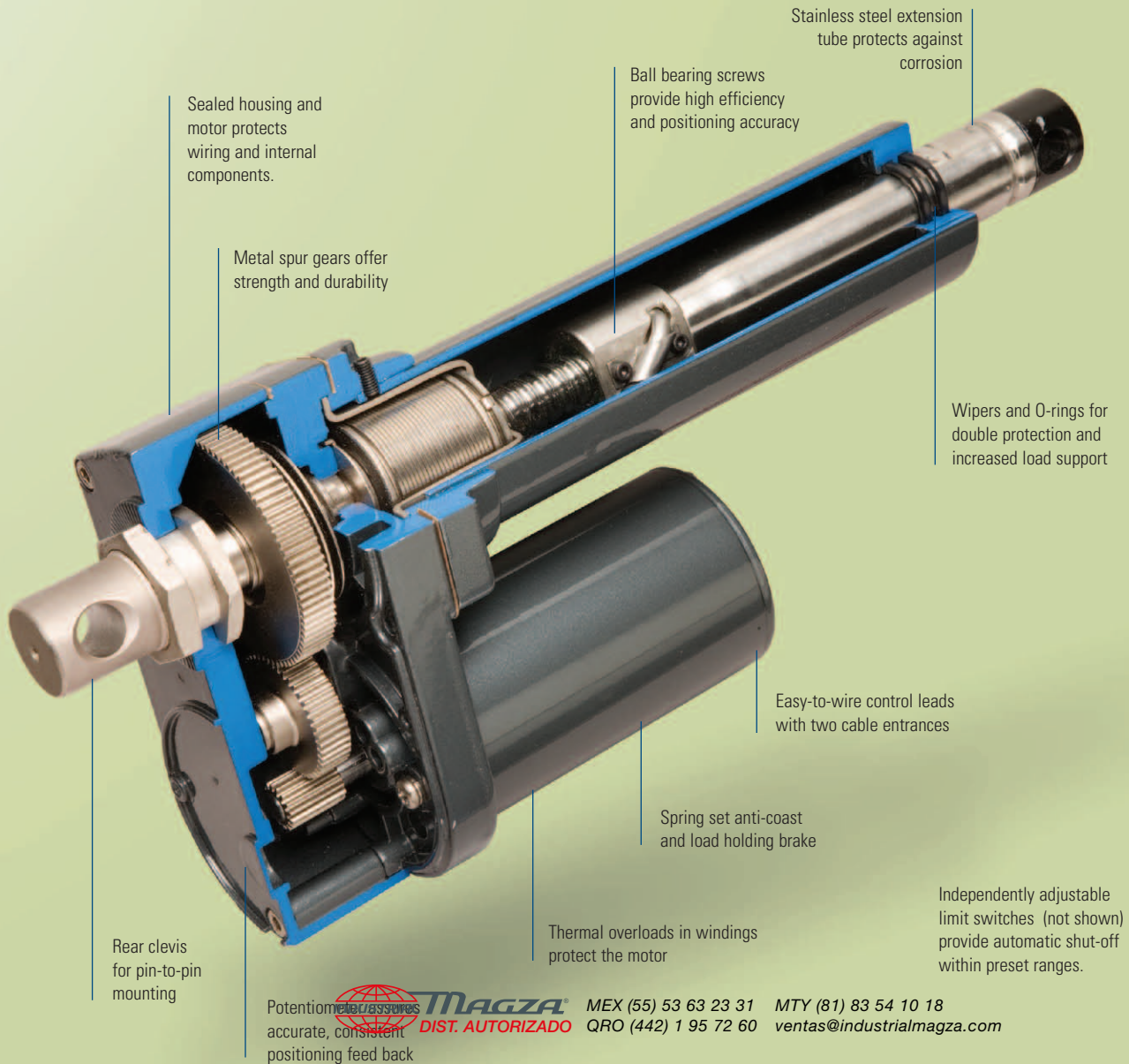
Superb holding power

A-Track actuators operate equally well under tension or compression loads. They will hold a load indefinitely without power, and can be directly interfaced to a programmable controller or other electronic device.

A-Track... Lightweight, low cost actuators designed to provide easy installation and quiet, maintenance-free operation.

Take a closer look at A-Track actuators from Warner Electric and you see what makes our actuators different. Our engineers have carefully designed A-Track actuators to provide long-lasting, maintenance-free operation in light, moderate and heavy-duty applications both in-plant and mobile in all types of conditions worldwide.

Models are available with Acme and Ball Screw drives to meet specific requirements. All A-Track actuators are manufactured to high quality standards utilizing proven materials and components.



A-Track models are available to meet a variety of application requirements

Warner Electric pioneered the development of ball bearing screw actuators for NC machine tools and jet aircraft landing gears, wing flap control, thrust reservoirs... all the way to the docking platform and manipulator arm on the space shuttle.

Our first generation of general purpose actuators were developed for remote pushbutton control of accessory drives on garden tractors and automated farm equipment. Today, you'll find proven design concepts incorporated on all A-Track industrial actuators.



A-Track 2/5

A-Track 2 and 5 Acme provide cost-effective, enclosed Acme Screw drive linear movement for light to moderate loads. These units are widely used for height adjustments, pitch control and remote positioning in both mobile and in-plant applications.





A-Track 1

The A-Track 1 provides a compact design for light loads and/or short distance movements. With end-of-travel limit switches included as a standard feature, the A-Track 1 provides load control and positioning for a wide variety of applications.



A-Track 5/10

The A-Track 10 and 5 Ball Screw provide high capacity, heavy-duty Ball Screw driven designs for both mobile and in-plant applications. These units are commonly used for positioning conveyor diverters and booms/snouts on agricultural equipment.



MEX (55) 53 69 29 31 MTY (61) 53 54 10 18
QRO (442) 1 95 72 60 ventas@industrialmagza.com

Typical Applications

Golf Cart Height Adjustment

Mower Blade Lift

Solar Panel Adjust

55 Gallon Drum Lift

Fire Engine Valve Adjust

Automated Dumpster

Scissor Lift Table

Round Baler Cover Lift

Walk Behind Floor Washer

Bulldozer Engine Cover Lift

Air Foil Adjust

Construction Sign Positioning

Forage Harvester Spout Positioning

Combine Spout Positioning

Lift Truck Lift

Adjustable Height Work Table

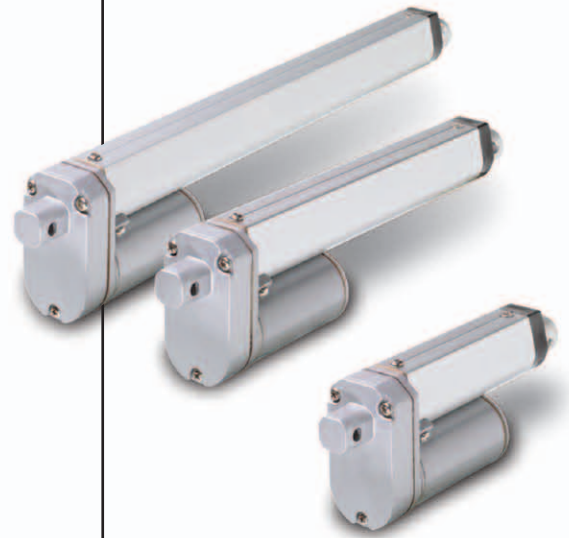
Conveyor Lateral Guide Positioning

Street Sweeper Bristle Lift

RV/Bus Compartment Extension

A-Track 1, 2

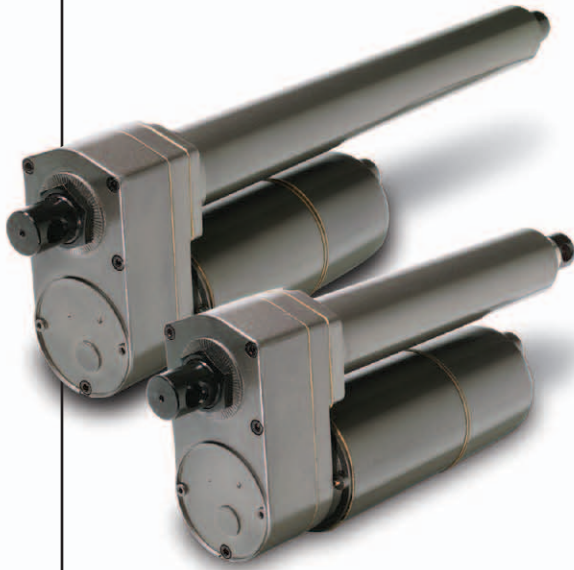
These Acme Screw driven actuators are completely self-contained and sealed to allow for use in small spaces without sacrificing power or capability. A-Track 1 units are designed for intermittent duty applications. A-Track 2 actuators provide a strong value for moderate duty applications.



	A-Track 1	A-Track 2
Type of Lead Screw	Acme	Acme
Input Voltage	12, 24 VDC	12, 24 VDC
Load Capacity (lbs.)	25, 50, 100, 165	330, 500
Stroke Length (inches)	2, 4, 6, 10, 12	4, 8, 12, 18, 24
Duty Cycle at Full Load	25%	25%
Load Limit Clutch	No	Yes
Limit Switches	Fixed	Optional*
Feedback	Optional	Optional
Motor Overload Protection	Yes	Yes
Restraining Torque (Max)	20 lb. in.	100 lb. in.

A-Track 5

A-Track 5 linear actuators are available with a Ball Screw drive for industrial and commercial applications and an Acme Screw drive for moderate duty interior applications.



A-Track 10

The A-Track 10 actuator is a DC motor driven, Ball Screw design actuator suitable for applications requiring maximum load capacity. These units are ideal for use in outdoor, mobile or ambient contamination environments.



A-Track 5

Acme	Ball Screw
115, 230 VAC	115, 230 VAC
330, 500	500, 1000, 1300
4, 8, 12, 18, 24	4, 8, 12, 18, 24
25%	25%
Yes	Yes
Optional*	Optional*
Optional	Optional
Yes	Yes
100 lb.in.	100 lb.in.

A-Track 10

Ball Screw
12, 24 VDC
500, 750, 1000
4, 8, 12, 18, 24
25%
Yes
Optional*
Optional
Yes
100 lbs.in.

*Limit switches are optional only in the maximum load capacity for each unit.

Altra Industrial Motion

Warner Electric

*Electromagnetic Clutches
and Brakes - USA*

South Beloit, IL 61080
815-389-3771

For application assistance:
1-800-825-9050

*Electromagnetic Clutches
and Brakes - Europe*

Allonnes, France
+33 (0)2 43 43 63 63

Precision Electric Coils - USA

Columbia City, IN 46725
260-244-6183

Boston Gear

*Enclosed and Open Gearing,
Electrical and Mechanical P.T.
Components*

Quincy, MA 02171
617-328-3300

For Customer Service:
1-888-999-9860

For Application Assistance:
1-800-816-5608

Formsprag Clutch

*Overrunning Clutches
and Holdbacks*

Warren, MI 48089
586-758-5000

For application assistance:
1-800-927-3262

Stieber Clutch

*Overrunning Clutches
and Holdbacks*

Heidelberg, Germany
+49 (0)6221 30 47 0

Marland Clutch

*Roller Ramp and Sprag Type
Overrunning Clutches
and Backstops*

Burr Ridge, IL 60527
630-455-1752

Nuttall Gear and Delroyd Worm Gear

*Worm Gear and
Helical Speed Reducers*

Niagara Falls, NY 14302
716-731-5180

Wichita Clutch and Industrial Clutch

*Pneumatic and Oil Immersed
Clutches and Brakes - USA*

Wichita Falls, TX 76302
940-723-3400

*Pneumatic Clutches
and Brakes - Europe*

Bedford, UK
+44 (0)1234 350311

Ameridrives Couplings

*Gear Couplings, Mill Spindles,
Universal Joints*

Erie, PA 16512
814-480-5000

Altra Industrial Motion - Asia Pacific

China	852 2615 9313
Taiwan	886 2 2577 8156
Singapore	65 487 4464
Thailand	66 2 322 0481
Australia	612 9894 0133

www.warnerelectric.com



Warner Electric
449 Gardner Street, South Beloit, IL 61080
Phone 815-389-3771 • Fax: 815-389-2582